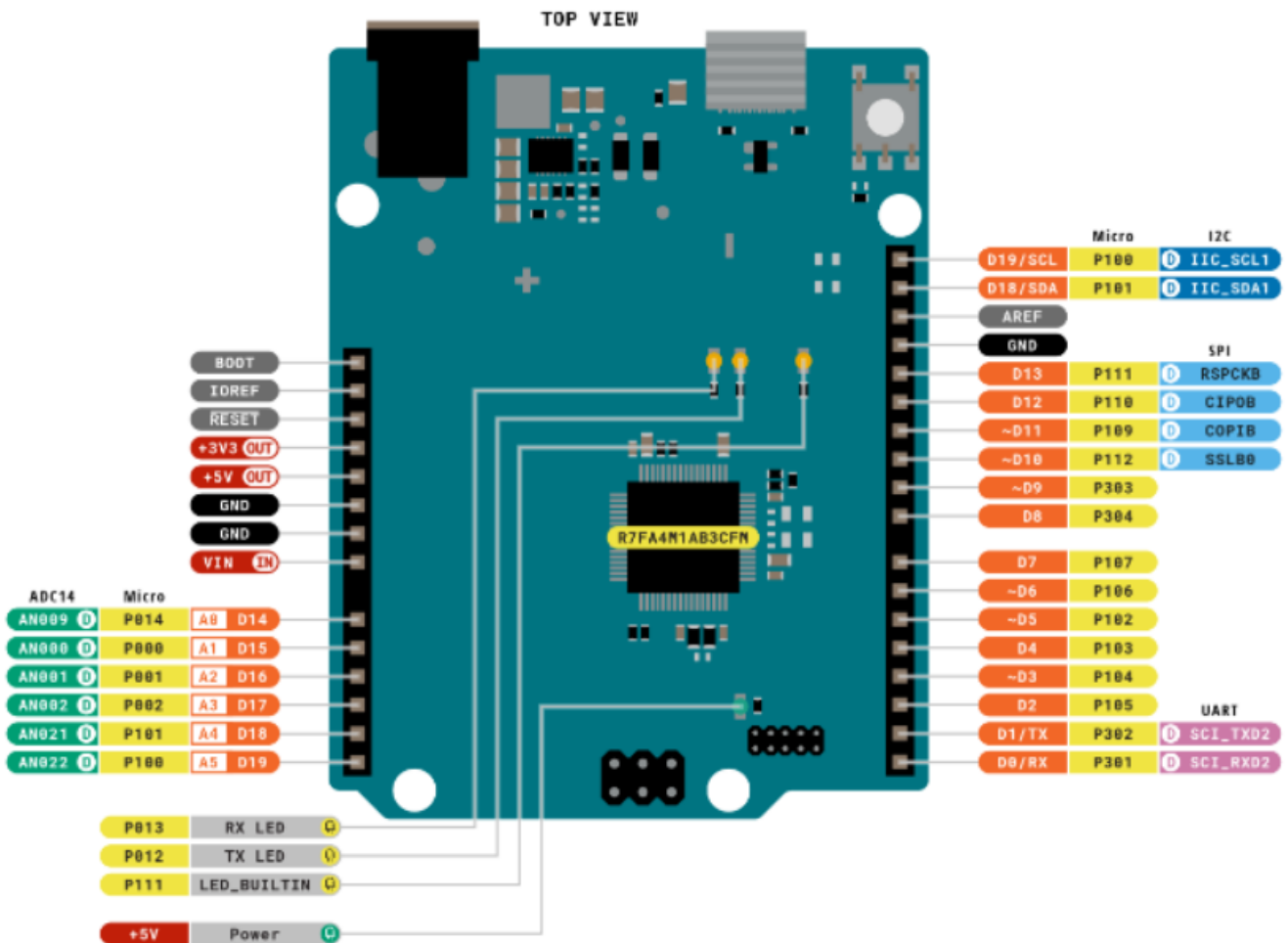


Internet of Things

[Arduino] Sensor Proximity

Sensor proximity adalah sensor jarak. Sensor ini dapat mendeteksi perubahan jarak pada suatu benda tanpa adanya kontak fisik.

Pinout Arduino



Contoh

//referensi koding

//sambungkan pin 5V sensor ke 5V arduino. pin GND sensor ke pin GND Arduino.
int sensorPin = A0; // sambungkan pin OUT sensor ke pin A0 Arduino.
int sensorValue = 0; // variable to store the value coming from the sensor

```
void setup() {  
  Serial.begin(9600); // set baudrate serial monitor ke 9600  
}
```

```
void loop() {  
  // read the value from the sensor:  
  sensorValue = analogRead(sensorPin);  
  Serial.print("Nilai Proximity : ");  
  Serial.println(sensorValue);  
  delay(5);  
}
```

Internet of Things

Unique solution ID: #1010

Author: Sena Turana

Last update: 2024-04-19 01:19